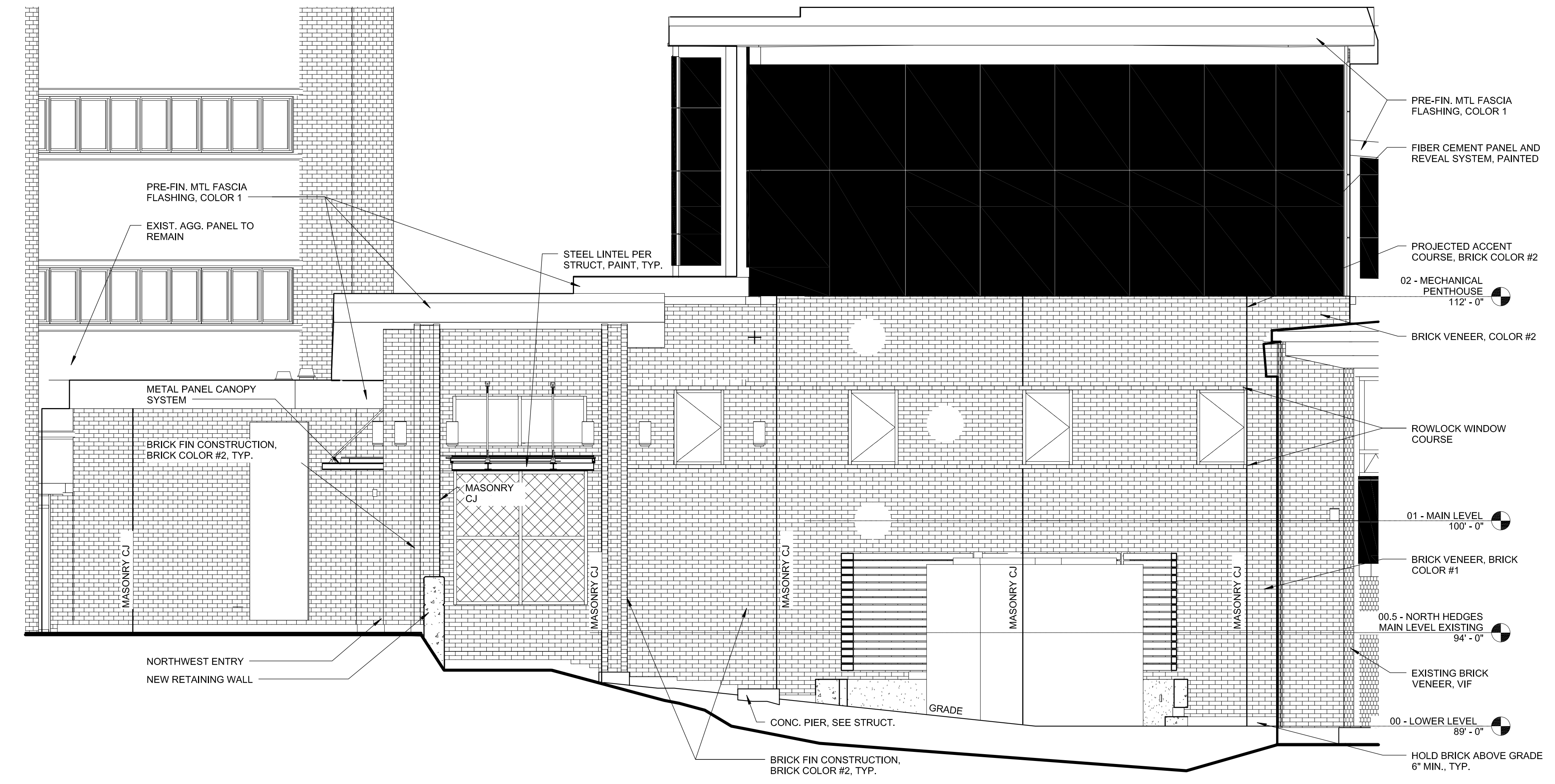
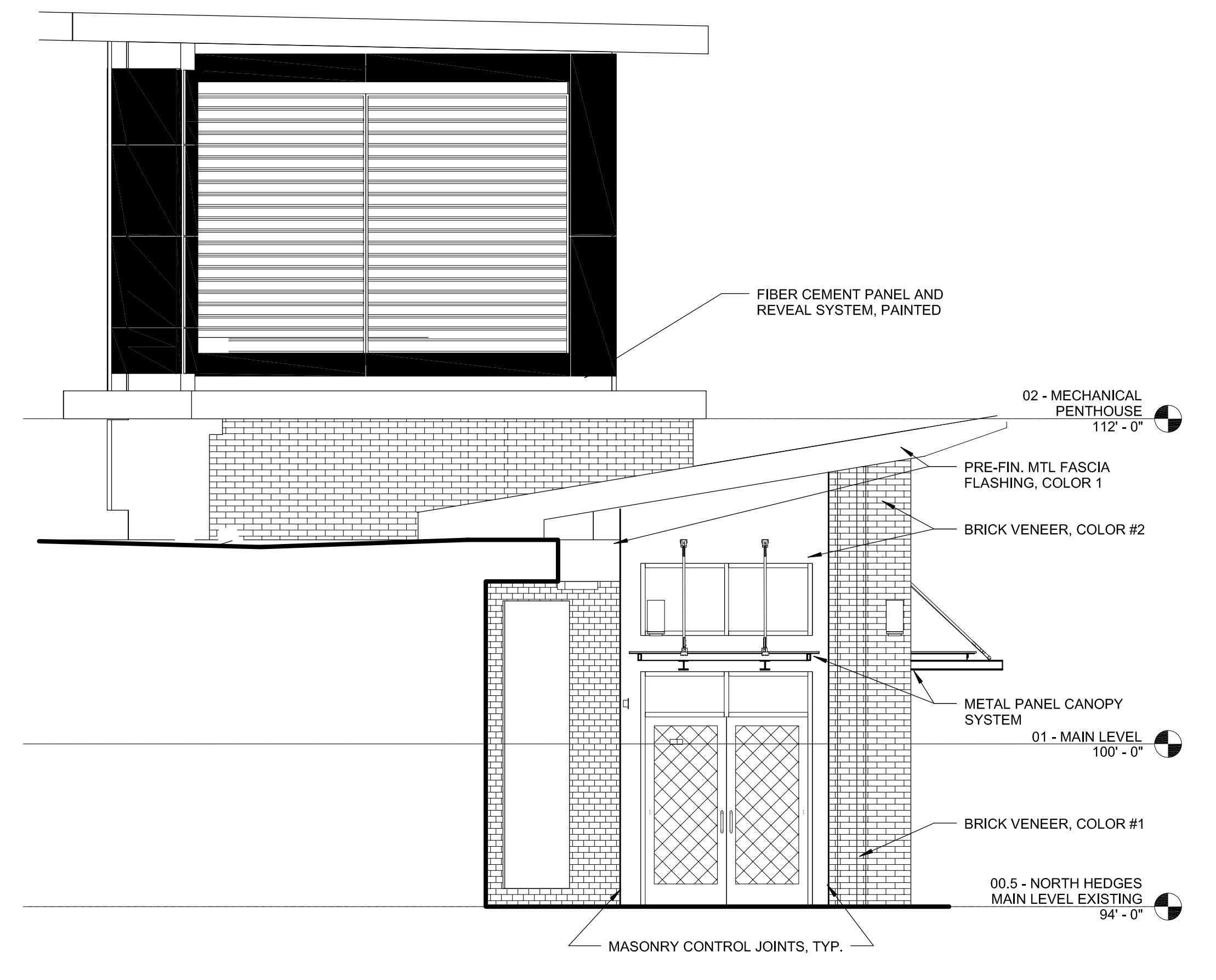


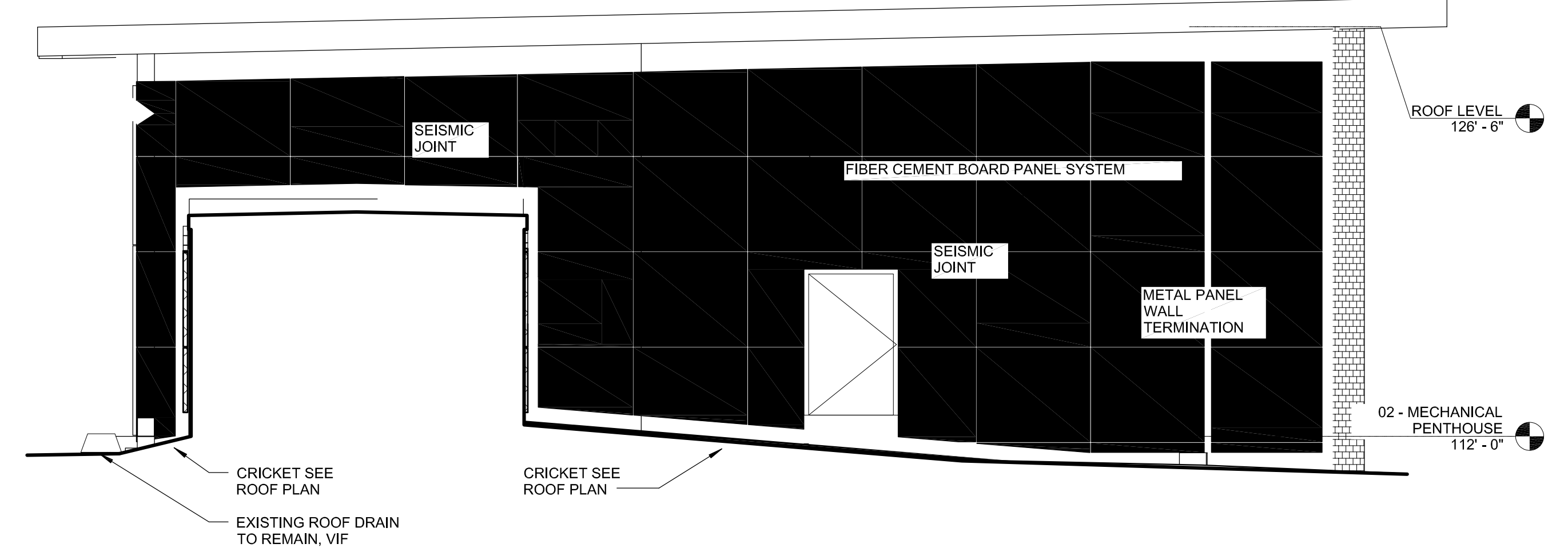
1 NORTH ENTRY - EAST ELEVATION
1/4" = 1'-0"



2 NORTH ENTRY - WEST ELEVATION
1/4" = 1'-0"



3 NORTH ENTRY - NORTH ELEVATION
1/4" = 1'-0"



4 NORTH ENTRY - SOUTH ELEVATION
1/4" = 1'-0"